

# COFELY FABRICOM

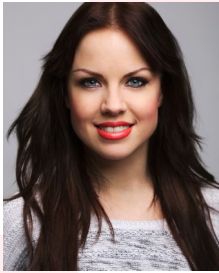
GDF SVEZ

## HEALTH & WELLBEING

Raising money for:



Leading the fight against dementia



**Joanne Clifton,**  
Professional Dancer  
from Strictly Come  
Dancing will be  
opening the event

© Chris Mann



*Come and join us on*  
**Sat 6th June 2015**

**10.30am - 4.00pm**

*Grimsby Institute, Nuns Corner*

# Charity Family Fun Day

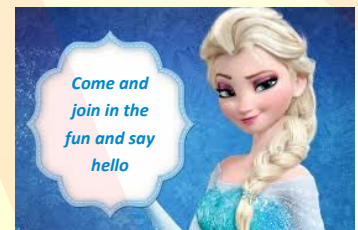
### What's on:

- ◆ **We're a Knockout**
- ◆ **7-A-Side Football**
- ◆ **Beat the Goalie**
- ◆ **Over 40's Fitness Challenge**
- ◆ **Stocks**
- ◆ **Don't Buzz the Wire**
- ◆ **Martial Arts Display**
- ◆ **Tombola, Raffle and Games**
- ◆ **Dowdes' Fun Fair Rides and Games**

### Food Vans



**Fresh Box - Strawberries & Cream**



Sponsored by:

