

Welcome to our Harvest Newsletter

A few words from the General Manager...

When we think of hunger we often think of third world countries, but unfortunately over the last few years food poverty has become an increasing issue in the UK. It is happening on our very own doorstep. At CARE through the Daily Bread Food Larder last year we fed over 3,600 people across North East Lincolnshire, what's perhaps more alarming is that 26% of those were children.

However, this need could not have been met without the support of local residents. During Harvest this year we have been overwhelmed by the food donations we have received from local schools, churches, businesses and supermarkets. This has particularly been welcomed due to the charity launching additional Food Larder Access Points over the summer (see details overleaf).

Our mission continues to try and relieve poverty, hardship and distress in the local community we serve. We thank you for everyone who continues to support and partner with us in our endeavours of doing this.

Sarah Taylor

"We are dedicated to relieving poverty, hardship & distress"





CARE News



Daily Bread Food Larder Access Points Update

Emergency Food Parcels are now donated from the following access points;

◆ Grimsby Access Point

CARE Family & Support Centre, 18 Hainton Avenue, Great Grimsby, DN32 9BB
Tel: 01472 232310
Email: grimsbyaccesspoint@carenelincs.co.uk

Opening Times:

For accessing food parcels

Monday - Friday 10am - 3:30pm

For accessing community support

Monday - Friday 10am - 3:30pm

◆ Immingham Access Point

Immingham Resource Centre, Margaret Street, Immingham,
DN40 1LE
Tel: 07419 374197
Email: imminghamaccesspoint@carenelincs.co.uk



Opening Times

For accessing food parcels

Monday - Friday 10am - 3:30pm

For accessing community support

Tuesday & Thursday 10am - 3:30pm

◆ Freshney Ward Access Point

Willows Community Church, Wingate Road, Willows Estate, Great Grimsby,
DN37 9EL
Tel: 01472 885568
email: freshneywardaccesspoint@carenelincs.co.uk

Opening Times:

For accessing food parcels

Tuesday & Thursday 10am - 3:30pm

For accessing community support

Tuesday 10am - 3.30pm

Community Support

A CARE Support Worker will be at the community drop-in to provide additional support and advice relating to any of the following;

Benefits Housing Utilities Debt Budgeting Sign Posting

"We are dedicated to relieving poverty, hardship & distress"

CARE News

What we've been up to at CARE over the last few months....

July

CARE partnered with the YMCA and Harbour Place back in January for their annual Sleep Easy event. The money raised was to help support these local charities who help to provide vital services to those who find themselves homeless. On Monday 21st July Anita Reynolds (our Tenancy & Support Officer) attended the YMCA's Annual General Meeting and was presented with a cheque for £3,100.

A big thank you to everyone involved!



August

On Saturday 2nd August we attended Immingham's annual festival called ifest. We used this opportunity to launch the new Immingham Food Larder Access Point to the residents of Immingham. Although the heavens opened most of the day, we still had plenty of opportunities to talk to people about the new service and we had lots of family activities on offer. A fun day had by all!



Volunteers Needed



care

christian action resource enterprise

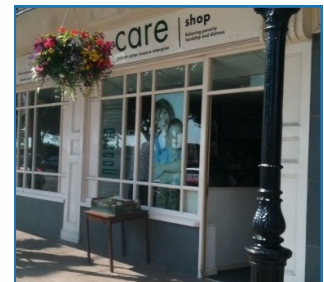
shop

Supporting the local community since 1992



Our charity shop in Cleethorpes is looking for volunteers to carry out some of the following roles;

- ◆ Customer Service Assistants
- ◆ Sorting through donations
- ◆ Lifting furniture & heavy items to display on the shop floor
- ◆ Assisting the Collection & Delivery Driver on the van



If you are interested in volunteering please contact CARE on 01472 232310 or email enquiries@carenelincs.co.uk for a volunteer application form.

"We are dedicated to relieving poverty, hardship & distress"



A Few Support Stories



"I'm 26 years old and have two young children, I'm currently renting a private property in Cleethorpes just yards away from the school my children attend but I could never have achieved this if it was not with the help and support through CARE.

CARE have not only helped me with finding a property for me and my children but also such things as financial help, life skills and confidence building throughout some of the most difficult times in my life. CARE has also helped with household furniture which I was unable to afford to buy being a single parent trying to budget my money each week.

Through the CARE shop they have helped me with pieces of furniture during my time on support such as a washing machine when mine had broken down. With having no washing machine, my son who was then only a baby, it became very hard keeping up with all of the dirty clothes that would pile up. Washing them by hand became a daily occurrence which I barely had time for with trying to juggle all other daily tasks and 2 children. I couldn't afford to use a launderette.

Looking back on these times in life I honestly don't know what I would have done without the help through CARE, their charity shop and my support worker. CARE has changed my life for the better in so many ways, helping not only me but also my children as well and for this I will always be forever grateful and thankful."

"I first came to CARE when I needed re-housing due to living in a house full of disrepair. CARE also helped me with furniture as I didn't have a bed at the time and me and my partner was sleeping on the floor and it made my back hurt. My partner suffers from a spine condition and it wasn't good for him to be sleeping on the floor either. My daughter also didn't have a bed; CARE got me beds and also a wardrobe as we were living out of suitcases.

You also helped me regarding my daughter; I knew there was something not quite right she was a lot younger in her ways than she actually is. It was a long slow process but with your help we got there I couldn't have done it without you. With your help I got a referral to the child development centre at the hospital. I got my appointment and she was diagnosed that day with moderate to severe dyspraxia.

You helped us with a claim for Personal Independence Payment and got me an appointment with the Citizens Advice Bureau. You also put me in touch and got me an appointment at Minds for myself to see a counsellor.

We also had parenting support working with us and my 4 children. You have helped me do reward charts and did my daughter a traffic light warning system which helps her a lot. My 2 boys now listen to me better than they did before.

Me, my partner and my children would like to say a massive thank you to all the staff at CARE for all their hard work. You have been a big help to me and my family. The work that you do is unbelievable. I wouldn't be where I am today if it wasn't for you all."



Toys for Joy Scheme



Throughout the year CARE work with and support very vulnerable and disadvantaged families. As we begin to panic at the thought of there being only 10 more Saturdays left until Christmas there are many parents across North East Lincolnshire who find this time of year the most distressing due to their financial situations. What should be a time of joy and peace, often ends up the opposite for these families.

Every year leading up to Christmas CARE runs a Toys for Joy Scheme and over the last 3 years we have given 1,600 gifts out to children in need in the local area. This year we are looking to run this scheme once again and would like to ask members of the public, organisations, schools, churches and businesses to partner with us to put a smile on the face of a child on the morning of Christmas Day.

If you would like to help all you need to do is donate any new or second hand toys (from birth to 18 years). Please drop them off at the following CARE premises closest to you and label the donation "Toys for Joy";

- ◆ CARE Family & Support Centre, 18 Hainton Avenue, Grimsby, DN32 8HG
Opening times are Monday to Friday 10am-3.30pm
- ◆ CARE Shop, 46-47 Alexandra Road, Cleethorpes, DN35 8LE
Opening times are Monday to Saturday 9am-4pm



A few new additions to The CARE Team...

Elaine Norton

Immingham Daily Bread
Food Larder Co-ordinator



Claire Hornsby

Parenting Support Worker





Free Parenting Advice



Come & meet our Parent Support workers for a cuppa and a chat

**At the Courtyard Café
(Back of Freeman Street Market)**

1st Weds of EVERY month

9:30am—11:30am

**Next session on Wednesday 5th
November 2014**

SCHOOL TERM TIME

CARE Shop

Our charity shop needs furniture and clothes of all types!

Donations can be made to the CARE Shop

46-47 Alexandra Road, Cleethorpes. 232312

For more information on our services contact;

**CARE, The Family & Support Centre,
18 Hainton Avenue, Great Grimsby,
North East Lincolnshire, DN32 9BB**

Tel: 01472 232310

**CARE Shop, 46-47 Alexandra Road,
Cleethorpes, DN35 8LE**

Te: 01472 232312

Email: enquiries@carenelincs.co.uk

Website: www.carenelincs.co.uk



christian action resource enterprise

Dedicated to relieving poverty, hardship & distress to people in need across North East Lincolnshire.

This is provided through the following services;



FOOD



HOUSING



FURNITURE



SUPPORT



PARENTING