

# VOLUNTARY ACTION



HELPING COMMUNITY GROUPS. HELP COMMUNITIES. HELP THEMSELVES.

## APRIL 2014 ISSUE

READ ALL ABOUT OUR SERVICES AND:

TECH TROUBLES  
VOLUNTEER CENTRE NEWS  
ENFUSE  
FACE THE CHALLENGE  
MEMBERS MOMENTS  
SIEMENS ENERGY BOOST

## TECH TROUBLES NO MORE

VANEL has for a long time championed the role technology has to play in supporting and assisting our member organisations. We've run a variety of technology and IT support programmes over the years, including WebClub which is now in its third year. And now, for the next year, we'll be stepping up our support further, thanks to a grant from the Big Lottery Awards4All fund, which means our "IT Supporters Network" will be able to be very active in supporting you throughout 2014.

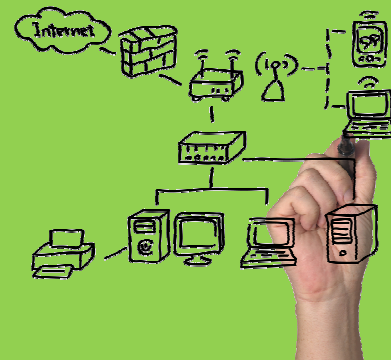
WebClub will continue, but we'll be also running quarterly Technology conferences, several monthly IT training courses, regular technology and social media surgeries and more is in the planning. The aim of everything we offer will be to help local organisations to use technology better and more effectively, use technology to communicate better, promote themselves better and deliver their services better.

Technology should empower groups, so we want to inform, inspire, educate, encourage and support the effective use of technology.

Those staff or volunteers in local charities and voluntary/community organisations who are carrying out the role of "IT supporter" for that organisation, will be able to get help from our "IT Supporters Network". We'll help you to help and support your own organisation better.

For information about what VANEL is doing with technology, keep an eye on [www.vaneldigital.org.uk](http://www.vaneldigital.org.uk). There's also an associated @vaneldigital Twitter. Anything you'd like to discuss or get help with, contact Karl Elliott ([karl@vanel.org.uk](mailto:karl@vanel.org.uk)) who runs the IT support programme.

Following our next WebClub on Wed 30th April, our first full training course is "Cooking up a website" (beginners guide to how websites are built) on Fri 2nd May. And our first major event is a half-day technology conference on Tue 6th May. There will be more events being scheduled and details being released soon, so keep an eye on the website.



ROAD WORKS ARE CURRENTLY OPERATING DOWN TOWN HALL STREET. BUT DON'T WORRY, OUR VOLUNTEER CENTRE IS STILL OPEN MONDAY - THURSDAY, 8:30AM - 4:30PM. SO COME AND SAY HELLO TO THE TEAM.



# Volunteer Centre

## North East Lincolnshire

A ROUND UP OF EXCITING LOCAL NEWS FROM US, OUR MEMBERS, FRIENDS AND THE COMMUNITY.

## WINTER PLANNING CAMPAIGN

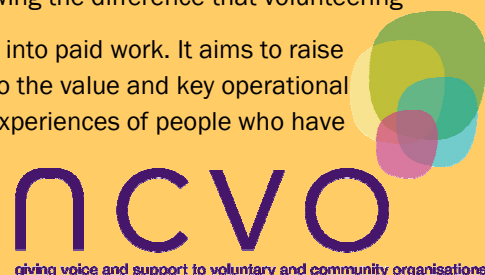
As this edition of our newsletter reaches you *spring will have sprung*, meaning that the Winter Planning Campaign has gone into hibernation for another summer. This winter has been mild, giving the volunteers and coordinators a quiet time in terms of snow.

There are a number of "THANK YOUS" that need to be made – the biggest to all the volunteers who have agreed to remain and support the campaign, to the steering group who have devoted their time to help drive the campaign forward, and ALSO to Martin Wakefield who has chaired the steering group for the past 3 winters.

During this summer's hibernation period there will be a number of background activities taking place, one of which is that VANEL with a small number of winter planning volunteers will be attending the **Care Plus Fun Day on 3rd May at People's Park**. The main piece of work planned is to look at what other winter related campaigns are out there and to make sure that duplication is kept to a minimum, so if you know of any other campaigns that are specifically winter related, would like to volunteer for the campaign, or are interested in joining the steering group, then please email : [vicky@vanel.org.uk](mailto:vicky@vanel.org.uk)

## VOLUNTEERING WORKS

An animated film from NCVO showing the difference that volunteering makes to individuals looking to develop skills and confidence in order to move towards or into paid work. It aims to raise the profile of the role of Volunteer Centres by alerting policy makers, funders and others to the value and key operational and strategic role played by Volunteer Centres across England. The film reflects the real experiences of people who have benefited from the service. To view the film and more of the in depth report on how deep the impact of volunteering goes then visit <http://youtu.be/vDgnSnbnQk> or <http://bit.ly/NZcBBE>



## GOT SOMETHING TO ADVERTISE?

Why not use our prime location at Town Hall Street to advertise your event, group, job or meeting in our dedicated window space for groups like yourself. For £25 a month this could be your chance to spread the word and get yourself noticed. Call us on 01472 231123 to book your space.

## WHAT CAN WE DO FOR YOU?

### DISCLOSURE & BARRING SERVICE (DBS)

VANEL is a DBS registered umbrella body that can process DBS checks for organisations in order that they can make informed decisions about the suitability of potential volunteers for recruitment to their volunteering opportunities. £15 per volunteer; £70 per paid staff member.

### SUPPORTING VOLUNTEERS AWARD (SVA)

In order to provide assurance for volunteers about the quality of voluntary and community groups and other organisations offering volunteering opportunities the team has developed the Supporting Volunteers Award. Level 1 (£25) demonstrates a minimum level of assurance including DBS checks, risk assessments and induction. Level 2 SVA costs £50.

### VOLUNTEER OPPORTUNITIES

With over 500 opportunities already on our database, why not advertise your opportunities through us and get on track to finding your perfect volunteer. We also profile volunteers to ensure a good match for your organisation.

**FOR MORE INFO VISIT US AT 14 TOWN HALL STREET**

"Only I can change my life. No one can do it for me."



### TEAM MEMBER OF THE MONTH

Hello there! I am Jenny and I have the wonderfully challenging honour of being Manager of the Enfuse team. My background is heavily involved in youth work, from voluntary roles to managing youth centres, to working for Princes Trust managing their business support volunteers to trainer assessor roles with youth schemes. This gradually over the years led to many links in with VANEL. Six years ago a post managing the involved project around young people and volunteering came up I was lucky enough to be offered the post and haven't looked back since.

I have a wide variety of interests personally which help with links into the community and with network development for my team of young adults from volunteering with environmental projects to playing sport. I am currently representing England in the over 50's category for Hockey and will be playing in the World Cup. Something me and my team are really proud of!



## READY FOR IT?

It's almost time for our latest Easter Programme in Immingham. We have 20 young people ready for the challenge of the week programme. We are running various workshops in Immingham all week and rewarding the young people with a trip to RockCity in Hull on the Friday if they've attended and behaved well all week long.

We have worked with the Troubled Families team and the local PCSO's to ensure we have the best young people on the programme who will benefit most. We are hoping to reduce ASB through Face The Challenge.

We will be updating more about this event next month so keep your eyes peeled for the impact that this programme has had.

## START YOUR ENGINES

The YouthBike project is for a group of young people between the age of 10-18 to transform an old motorbike to something new and unique. We have some young people and volunteers to work on this project together so the young people can gain new skills whilst enjoying themselves and tackling some of their issues. At the end of the project they will go on a trip to the youthbike event held every year to show off their bike in a competition against many others. Anybody is welcome to get involved as we need different skills that can be offered towards the project varying from mechanics to photography. This is a great opportunity for young people to work with members of the community and organisations to create and develop better relationships with each other!



To get involved contact Anneliese on 01472 315437 or email [anneliese@vanel.org.uk](mailto:anneliese@vanel.org.uk)



## SMASH A RECORD

Get yourself down to King George V Stadium on 12th April to get involved in all the fun and healthy activities that will be happening!



IF YOU WANT TO GET INVOLVED WITH THE ENFUSE TEAM OR WANT US TO HELP YOU THEN CONTACT US

01472 315437

[ENFUSE@VANEL.ORG.UK](mailto:ENFUSE@VANEL.ORG.UK)

[WWW.FACEBOOK.COM/ENFUSEGY](http://WWW.FACEBOOK.COM/ENFUSEGY)

[@ENFUSEGY](https://www.instagram.com/ENFUSEGY)



# GRIMSBY FOOD KITCHEN -

## OUR MEMBER OF THE MONTH

Every month at VANEL we choose one of our members to be our member of the month, and this month we have chosen the Grimsby Food Kitchen.

The Grimsby Food Kitchen is a voluntary organisation which is run by Kath and Ken Homewood. As Christians they both feel they should be offering support, love and encouragement to people less fortunate than themselves. On Sundays I cook a hot meal for about 70 people that are homeless, or those who are struggling, feel isolated and lonely. The GFK totally relies upon donations of food and support and without the hard work of our volunteers simply wouldn't be able to run the service. We also want to see a change in their willingness to be free of drugs and alcohol abuse, and as part of this we take them to rehab called 'Bitel of Britain'

The service is coming up to celebrating its 8th birthday, proving the need for a great service like this in our area.

They are currently based at the Mind Centre on Kent Street and open their doors on Sundays at 12.00 and only close once all the food has been eaten. They do a variety of different meals and regularly have a large number of people coming to see them and enjoy the gorgeous food that is prepared for them. For ways to contact the Grimsby Food Kitchen contact Kath and Ken on **07926 516857**.

**MEMBERS & FRIENDS FEES DUE NOW - £25  
PER ANNUM - EXCELLENT VALUE FOR MONEY**

MEMBERSHIP OF VOLUNTARY ACTION IS  
OPEN TO ALL LOCAL CHARITIES AND  
COMMUNITY ORGANISATIONS.

TO ARRANGE PAYMENT PLEASE CONTACT  
**PETER@VANEL.ORG.UK**



## SUCCESS FOR CARE4ALL

Care4All have had Investors In People come into their organisation to determine where the gaps in there systems and processes are. They are delighted to announce that after that first assessment they have been accredited immediately. It is a fabulous outcome and demonstrates how far they have come in such a short space of time. The hard work putting new systems and new processes in place has really paid off. They would like to thank all those staff who took part in the random selection of interviews by the assessor, for their honesty in giving their thoughts and opinions to the questions asked.

We are always wanting more stories and events from our members and friends. If you want to have your story here then why not email our editor at [editor@vanel.org.uk](mailto:editor@vanel.org.uk) to get your spot ready for next issue?

**4AllSeasons**  
Part of Care4all Registered Charity No. 1146255

402 Cromwell Road Grimsby DN51 2BN  
(opp Grimsby Leisure Centre)

# PLANT SALE

**May 2014**

SAT	3 <sup>rd</sup>	9am - 12pm
SUN	4 <sup>th</sup>	9am - 12pm
MON	5 <sup>th</sup>	9am - 12pm
SAT	10 <sup>th</sup>	9am - 12pm
SUN	11 <sup>th</sup>	9am - 12pm
SAT	14 <sup>th</sup>	9am - 12pm
SUN	25 <sup>th</sup>	9am - 12pm

**June 2014**

SUN	1 <sup>st</sup>	9am - 12pm
SAT	7 <sup>th</sup>	9am - 12pm
SAT	20 <sup>th</sup>	9am - 12pm
SUN	22 <sup>nd</sup>	9am - 12pm

Another fantastic chance to get your hanging baskets filled!  
We will be accepting hanging baskets for filling.  
Please bring your own plants and soil.  
Baskets will need to be collected from site.

**Care4all**  
Registered Charity No. 1146255

**Some upcoming events from our members. For more information about events in North East Lincolnshire why not visit [www.vanel.org.uk](http://www.vanel.org.uk) for the latest events.**

Grimsby & District Live At Home Scheme introduces Our "New"

**Coming Together Initiative**

## Movement To Music for Seniors

10—10.45am

### Qigong Tai Chi ( Relaxation)

(Seated or Standing)

11—11.45am

£3.00 per session  
(or £5 for both)

St Christophers Church, Welhome Road, Grimsby  
Tuesday Mornings Starting 11th March 2014—Doors open 9.30am

Contact Ann-Marie or Anita  
for more information (01472) 602080

# MEMBERS MOMENTS

Got an event coming up? Got a story to share? Well send your stories to email [editor@vanel.org.uk](mailto:editor@vanel.org.uk) to get your stories ready for the next issue of the VANEL newsletter.



## NEW PREMISES FOR CREDIT UNION

A new chapter started on Monday 17/3/14 with the re-launch of the North East Lincolnshire Credit Union (NELCU) thanks to funding and support from North East Lincolnshire Council.

North East Lincolnshire Credit Union has opened new premises in the council's Municipal Offices in Town Hall Square, Grimsby, and will also shortly be opening at the Civic Offices in Cleethorpes.

The Credit Union offers payroll deduction schemes for employers and deposits can be made to them in a range of ways including standing order direct to your savings account.

Welfare reform and the economic downturn has highlighted the need for an effective and expanded credit union in North East Lincolnshire to offer safe loans and reduce the reliance of some households on high street, door step and pay day loan companies.

Cllr Ros James, portfolio Holder for Citizens and Inclusion at the council, said the value of an effective credit union could not be underestimated, adding:

"The credit union is there to help people take control of their money, budget for their bills and plan for the future.

"One of the key products they are working to offer is a budgeting account for those who cannot access bank accounts which enable automated payments to landlords and other service providers thereby helping those who will receive the single monthly payment of Universal Credit to budget their money and have automated rent and other payments. "

Some services include savings accounts, budgeting accounts for paying bills (including a pre-paid card) and fair, affordable loans.

NELCU director Clive Pinder said: "We also offer a service to pay rent directly to landlords. We can offer a 'save from pay' scheme to deduct money directly from your pay, for example as a Christmas savings plan"

North East Lincolnshire Credit Union is open from 9am to 4pm Monday to Friday at the Municipal Offices, Town Hall Square, Grimsby and will be at the Civic Offices, Cleethorpes from mid-April.

Visit [www.nelcu.org](http://www.nelcu.org) or call 01472 361990 for further information.



Last month at VANEL, we chose CARE as our member of the month and have been donating food all month to help support the rise of food poverty in the area and support the great work that CARE do. We admire the work that the workers and volunteers do for people in need. Visit [www.carenelincs.co.uk](http://www.carenelincs.co.uk) for contact details and ways to help volunteer or donate food to help this ever needed service.



## INANDAROUND

**Did you know that each of the wards in North East Lincolnshire have their own dedicated website kept up to date by members of the community and the community development workers here at VANEL?**

Why not visit <http://nel.inandaround.org.uk> and find out what's going on in your local ward?

If you'd like to get involved with this ever expanding project then contact [karl@vanel.org.uk](mailto:karl@vanel.org.uk) or [thomas@vanel.org.uk](mailto:thomas@vanel.org.uk)

**- MEMBERS & FRIENDS FEES DUE NOW - £25 PER ANNUM – EXCELLENT VALUE FOR MONEY -  
MEMBERSHIP OF VOLUNTARY ACTION IS OPEN TO ALL LOCAL CHARITIES AND COMMUNITY ORGANISATIONS.  
TO ARRANGE PAYMENT PLEASE CONTACT [PETER@VANEL.ORG.UK](mailto:peter@vanel.org.uk)**





Green  
Port Hull

## SIEMENS INVESTMENT BOOST TO THE ENERGY ESTUARY

Today's announcement by Siemens to invest £160m on two of the enterprise zone sites in the Humber is a huge boost to the region and a catalyst for more investment.

Combined with the £150m being invested by Associated British Ports (ABP) in Green Port Hull a total of £310m will be invested creating up to 1,000 direct jobs, with many extra jobs to be created during construction and indirectly in the supply chain.

To read the full article about this huge investment, and the potential knock on effects for North East Lincolnshire then visit <http://www.humberlep.org/news>

## Payroll Services

The payroll service takes the hassle of PAYE away from small and medium size organisations. Our service can cater for a single or multiple employees including direct payments and dealing with RTI. Email: Angela Barker on [angela@vanel.org.uk](mailto:angela@vanel.org.uk)

## THANKS FOR READING

Please email [thomas@vanel.org.uk](mailto:thomas@vanel.org.uk)

with your comments and feedback about this issue.

**DON'T FORGET TO VISIT [WWW.VANEL.ORG.UK](http://WWW.VANEL.ORG.UK) FOR ALL THE LATEST NEWS AND INFORMATION ON WHAT'S GOING ON IN NORTH EAST LINCOLNSHIRE.**

[www.vanel.org.uk](http://www.vanel.org.uk)

Follow us on twitter @vaneltalk @vaneldigital @enfusegy



Volunteer Centre  
North East Lincolnshire



Voluntary Action North  
East Lincolnshire

**enfuse**  
Helping Young People, Help Communities,  
Help Themselves

**FYT**  
Fusion  
Youth Theatre

## VOLUNTEERING OPPORTUNITY OF THE MONTH

### Public Relations Officer

Do you want to join an enthusiastic and vibrant team of volunteers?

Do you have great communication skills and the ability to think outside of the box?

Do you want to get actively involved in working with young people in the area?

If so then Fusion Youth Theatre needs you.

Come and help build their public profile and get involved in some of their many creative projects and help develop young peoples self esteem.

For more information about this exciting and rewarding opportunity then please contact Thomas at [thomas@vanel.org.uk](mailto:thomas@vanel.org.uk) or call him on 01472 315437

Powered by



Volunteer Centre  
North East Lincolnshire

## CONTACT Us

14 TOWN HALL STREET

GRIMSBY

DN31 1HN

01472 231123

We are open Monday—Thursday

from 9am until 4:30pm